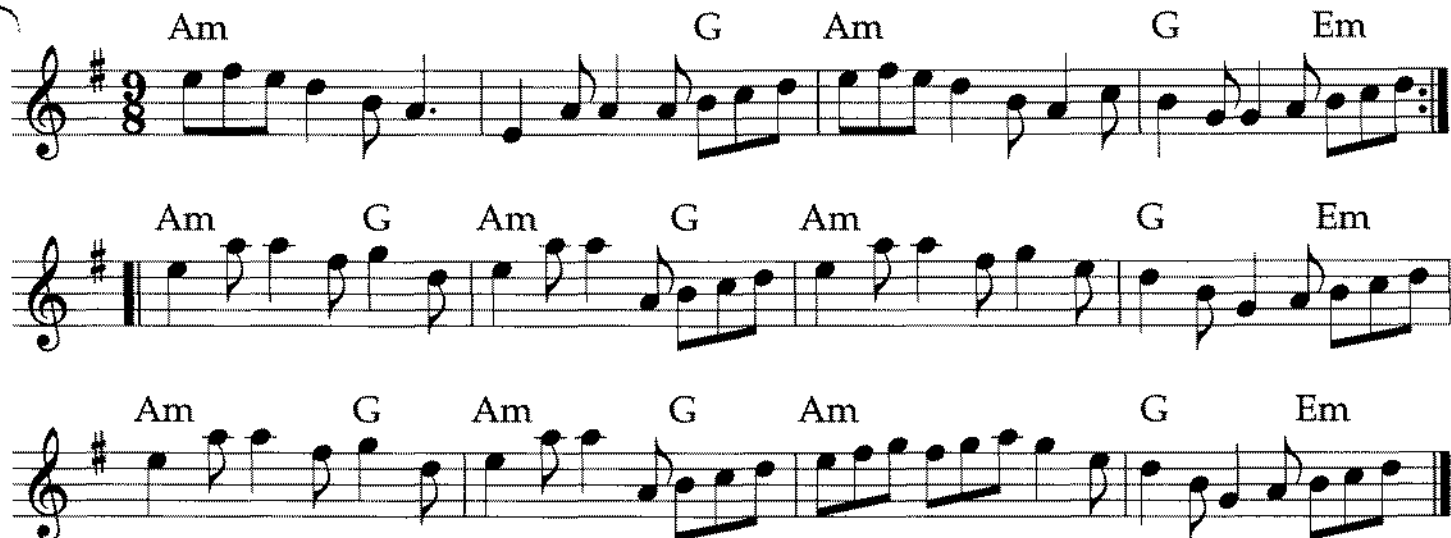


Rocky Road to Dublin



Musical notation for 'Rocky Road to Dublin' in treble clef, 3/8 time, key of D major. The piece consists of three staves of music. The first staff begins with a treble clef and a 3/8 time signature. The second and third staves begin with a repeat sign. Chord symbols are placed above the notes: Am, G, Am, G, Em on the first staff; Am, G, Am, G, Am, G, Em on the second staff; and Am, G, Am, G, Am, G, Em on the third staff.

Another Jig Will Do



Musical notation for 'Another Jig Will Do' in treble clef, 3/8 time, key of D major. The piece consists of three staves of music. The first staff begins with a treble clef and a 3/8 time signature. The second and third staves begin with a repeat sign. Chord symbols are placed above the notes: D, C, D, A, D on the first staff; D, C, D, A, D on the second staff; and C, D, A, D on the third staff.

Deirdre's Fancy



Musical notation for 'Deirdre's Fancy' in treble clef, 3/8 time, key of D major. The piece consists of two staves of music. The first staff begins with a treble clef and a 3/8 time signature. The second staff begins with a repeat sign. Chord symbols are placed above the notes: Em, D, Em, B7, Em on the first staff; and Em, D, Em, D, B7, Em on the second staff.

Coleman's #1

Am⁷ Em⁷ Am⁷ F Am⁷ Em⁷

F Dm⁷ G Dm⁷ G

F Dm⁷ G Em⁷

The Butterfly

Em D Em D Em D G D

Am Bm Am C Bm

Em D Em D Bm

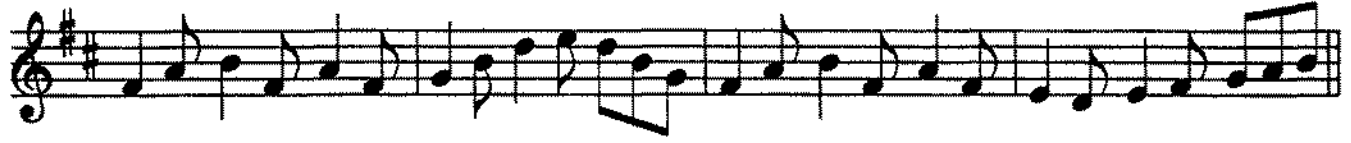
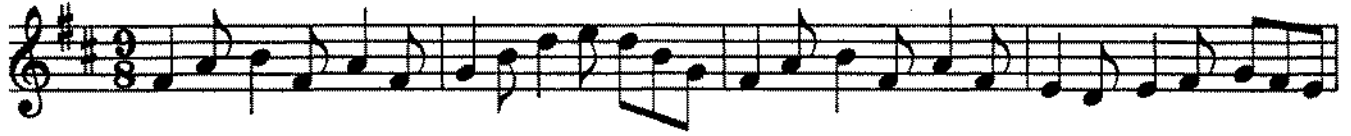
Fig for a Kiss

Musical score for "Fig for a Kiss" in G major (one sharp). The piece consists of three staves of music. The first staff begins with a treble clef and a key signature of one sharp (F#). The second staff begins with a repeat sign. The third staff ends with a double bar line and repeat dots. Chord symbols are placed above the notes: Em, D, Em, C, D, Em on the first staff; Em, D, Em, G, C on the second staff; and Em, D, Em, D, Em, C, D, Em on the third staff.

Eagle's Whistle

Musical score for "Eagle's Whistle" in G major (one sharp). The piece consists of four staves of music. The first staff begins with a treble clef and a key signature of one sharp (F#). The second staff begins with a repeat sign. The third and fourth staves end with a double bar line and repeat dots. Chord symbols are placed above the notes: G, Am, G/B, C, D7, Am, D7, C on the first staff; G, Am, G/B, C, G, D7, G on the second staff; C, Bm, C, Am, D7, Am, D7, Em on the third staff; and C, Bm, C, D7, G, D7, G on the fourth staff.

The Snowy Path



Drops of Brandy

Musical notation for 'Drops of Brandy' in 3/8 time, key of D major. The piece consists of three staves of music. The first staff begins with a G chord, followed by D, G, C, and D. The second and third staves continue the melody with similar chord progressions: G, D, G, C, D and G, D, C, D respectively.

Barney Brallaghan

Musical notation for 'Barney Brallaghan' in 3/8 time, key of D major. The piece consists of three staves of music. The first staff begins with a D chord, followed by G, D, G, and A. The second and third staves continue the melody with similar chord progressions: D, G, D, G, D, G, A and D, C, A, D, G, D.

The Foxhunter

Musical notation for 'The Foxhunter' in 3/8 time, key of D major. The piece consists of four staves of music. The first staff begins with a D chord, followed by G, D, A, D, G, and D. The second and fourth staves include an Em chord. The second staff continues with G, D, Em, D, A, D. The fourth staff continues with G, D, Em, D, A, D. The third and fifth staves continue the melody with similar chord progressions: D, G, D, A, D, G, D and D, G, D, A, D.

Boys of Ballysodare

Musical notation for 'Boys of Ballysodare' in G major, 9/8 time. The piece consists of four staves of music. The first staff has chords G, C, D, G, C, Am, D. The second staff has chords G, C, D, G, C, G, Am, D. The third staff has chords G, C, G, Am, D. The fourth staff has chords G, C, G, Am, D. The music features a mix of eighth and sixteenth notes with a characteristic jig rhythm.

The Butterfly

Musical notation for 'The Butterfly' in G major, 9/8 time. The piece consists of three staves of music. The first staff has chords Em, D, Em, D, Em, D, G, D. The second staff has chords Am, Bm, Am, C, Bm. The third staff has chords Em, D, Em, D, Bm. The music features a mix of eighth and sixteenth notes with a characteristic jig rhythm.

SJ-6